

Emergency Planning & Resilience

Members Development Training (Wed 20 Sep 2017)

Wayne Jones

Principal Emergency Planning Officer



Aim of my Presentation

To explain and discuss:

- Civil Contingencies Act (CCA) 2004
- Dyfed Powys Local Resilience Forum
- Emergency Services Command Structure (Gold, Silver & Bronze) and PCC Roles
- 'Business Continuity' & 'Emergency' Planning
- Elected Members Guidance



Members Resilience Training

Civil Contingencies Act (CCA) 2004



Civil Contingencies Act (CCA) 2004

- UK Legislation
- An “Emergency” (and 4 x ‘Stages’)
- Category 1 & 2 Responders
- Integrated Emergency Management
- Roles & Expectations of Responders



CCA 2004 “Responders”

Category 1 Responders (Core / Main)

- **County Councils**
- Metropolitan District Councils
- Unitary Councils
- Shire District Councils
- **Police Forces**
- **Fire Authorities**
- **Ambulance Service**
- **NHS Trusts (Health Boards)**
- Marine & Coast Guard Agency
- **Natural Resources Wales**

Category 2 Responders (Cooperating / Supporting)

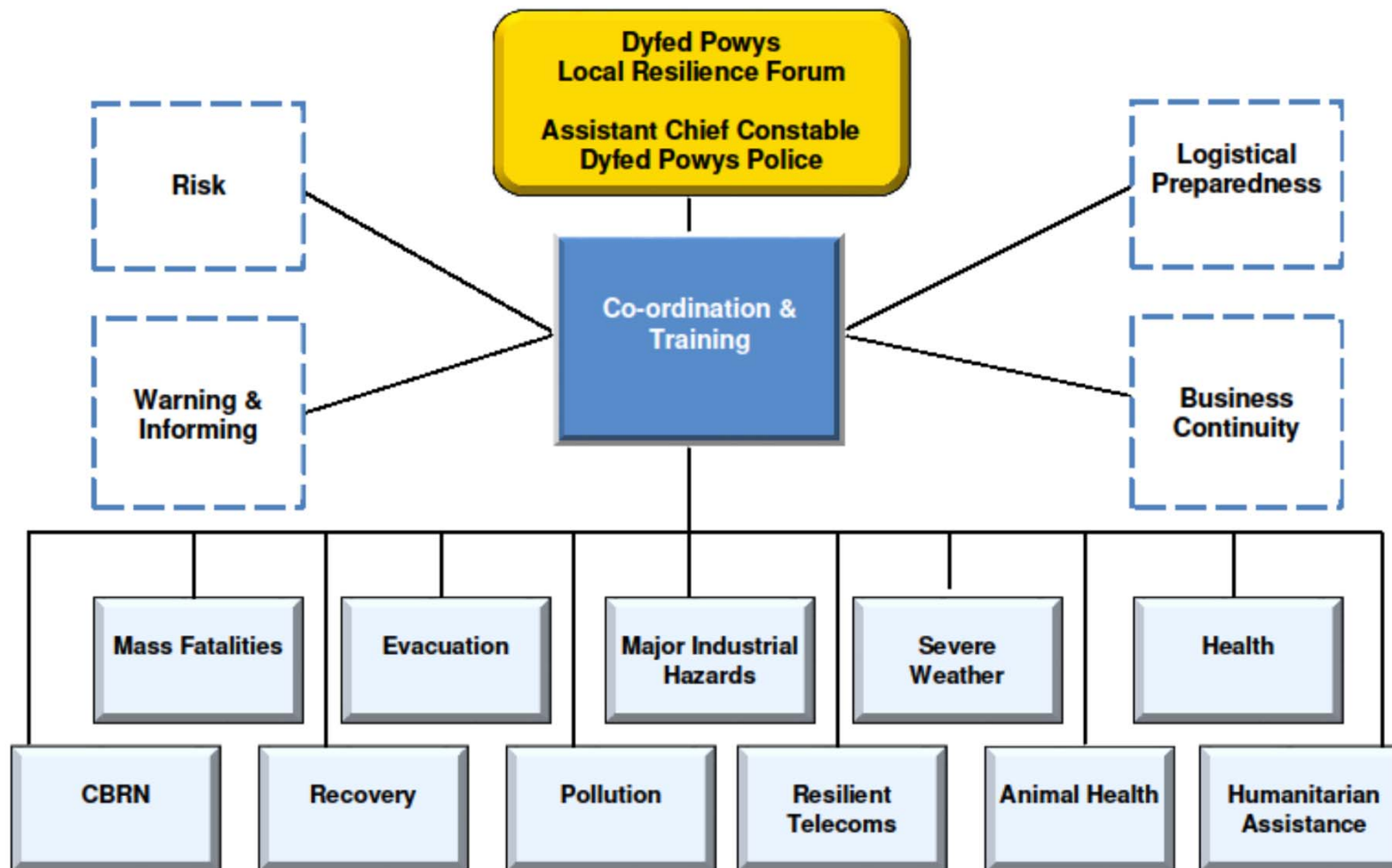
- Electric Suppliers
- Gas Suppliers
- Water Undertakers
- Telecom Operators
- Rail Operators
- Airport Operators
- Harbour Authorities
- H&S Executive



Members Resilience Training

Dyfed Powys Local Resilience Forum (LRF)





Members Resilience Training

GOLD	STRATEGIC
SILVER	TACTICAL
BRONZE	OPERATIONAL

Emergency Services Command Structure



“Why”

- Ensures conformity across Responders
- Negates confusing ‘Rank’ Structures

PCC Roles & Responsibilities

All Officers

- To act on behalf of the Council in providing support to the Emergency Services
- Remembering that officers are representing the Council and not their individual Department / Section



GOLD	STRATEGIC
SILVER	TACTICAL
BRONZE	OPERATIONAL

OPERATIONAL (aka 'Bronze')

- Executes Tactical Plan (from Silver)
- Commands single-service response
- Coordinates actions
- Can be a number of 'Bronze Controls'

PCC Representation: any PCC Officer

NB: At or close to scene (the 'Coalface')

GOLD	STRATEGIC
SILVER	TACTICAL
BRONZE	OPERATIONAL

TACTICAL (aka 'Silver')

- Interprets Strategic Direction (from Gold)
- Develops Tactical Plan
- Coordinates activities and assets

PCC Representation: Heads of Service OoH Rota

NB: Not necessarily at the scene

GOLD	STRATEGIC
SILVER	TACTICAL
BRONZE	OPERATIONAL

STRATEGIC (aka 'Gold')

- Sets 'Strategic' Direction (for Silver & Bronze)
- Coordinates responders
- Prioritises resources

PCC Representation: SMT OoH Rota

NB: Strategic Coordination Centre, Carmarthen



PCC Roles & Responsibilities

Elected Members

- Conduit To / From Community
- “Talking Head” for Local & National Media
- Control Emergency Fund



Members Resilience Training

BCP or MIP?



BCP or MIP?

- **Business Continuity Planning**
“The Day Job” (PCC’s Internal Face (BCP))
- **Emergency Planning**
Liaison / work with other Cat 1 & Cat 2
Responders (PCC’s External Face (MIP))
- **Resilience** - The Combination of both

Elected Members Guidance Emergency Planning & Response



Guidance Document developed by:



Under the umbrella of the Dyfed Powys Local Resilience Forum



Elected Members Guidance

Emergency Planning & Response

- Produced by Dyfed-Powys LA Emergency Planning Departments
- Ensures consistency across Dyfed-Powys LRF area
- Compliments Major Incident Plan (MIP)
- Member Guidance (Pages 13-15)
- *NB: Electronic version available in Member Development Library (on Modern.gov system)*



To Close

To explain and discuss:

- Civil Contingencies Act (CCA) 2004
- Dyfed Powys Local Resilience Forum
- Emergency Services Command Structure (Gold, Silver & Bronze) and PCC Roles
- 'Business Continuity' & 'Emergency' Planning
- Elected Members Guidance



EMERGENCY PLANNING & RESILIENCE



Heddlu Police
**DYFED
POWYS**

PS Ashley Brice
September 2017





Aim

To explain the Police / Local Authority (LA) interaction during an emergency or 'Major Incident'

To clarify the Police expectations of Powys County Council



Major Incident



Heddlu Police
DYFED-POWYS





Major Incident (MI) Definition

An event or situation, with a range of serious consequences, which requires special arrangements to be implemented by one or more emergency responder agencies.



The Four Stages



- **Initial Response**
(Usually Police)
- **Consolidation Phase**
- **Recovery Phase**
(Usually LA)
- **Restoration To Normality**



Joint Emergency Services Interoperability Programme (JESIP)

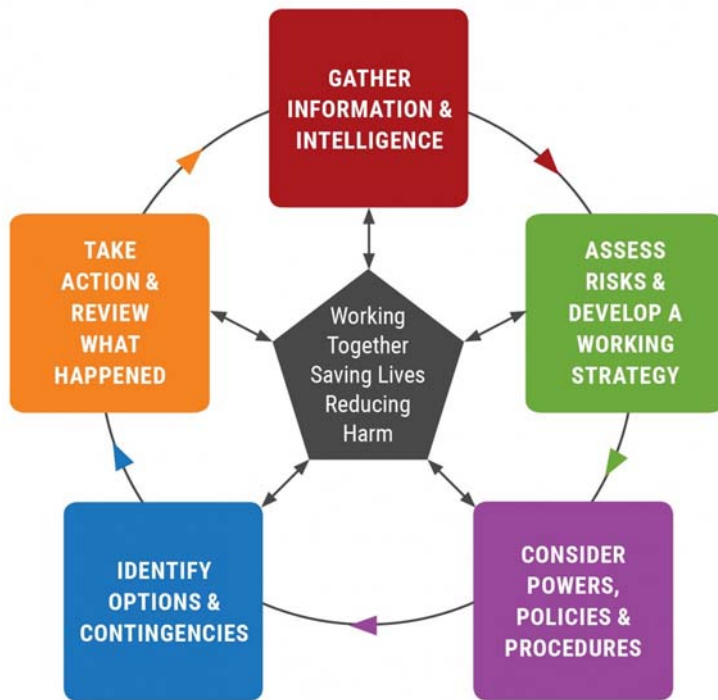
JESIP was primarily about improving the way the Police, Fire & Rescue and Ambulance services work together when responding to major multi-agency incidents.

JESIP produced much needed practical guidance to help improve multi-agency response. The Joint Doctrine: the interoperability framework sets out a standard approach to multi-agency working, along with training and awareness products for organisations to train their staff.

Initial focus was on improving the response to major incidents, JESIP is scalable. The joint working principles and models can be applied to any type of multi-agency incident and in fact could be utilised in a multitude of environments where organisations need to work together more effectively.



JESIP – Shared Situational Awareness



M	MAJOR INCIDENT
E	EXACT LOCATION
T	TYPE OF INCIDENT
H	HAZARDS
A	ACCESS
N	NUMBER OF CASUALTIES
E	EMERGENCY SERVICES

I	INFORMATION
I	INTENT
M	METHOD
A	ADMINISTRATION
R	RISK ASSESSMENT
C	COMMUNICATIONS
H	HUMANITARIAN ISSUES



Heddlu Police
DYFED-POWYS



JESIP - Joint Working

Co-locate

Co-locate with commanders as soon as practicably possible at a single, safe and easily identified location near to the scene.

Communicate

Communicate clearly using plain English.

Co-ordinate

Co-ordinate by agreeing the lead service. Identify priorities, resources and capabilities for an effective response, including the timing of further meetings.

Jointly understand risk

Jointly understand risk by sharing information about the likelihood and potential impact of threats and hazards to agree potential control measures.

Shared situation awareness

Shared Situational Awareness established by using METHANE and the Joint Decision Model.



Heddlu Police

DYFED-POWYS



JESIP - App



Heddlu Police
DYFED-POWYS



Command Structure

GOLD	STRATEGIC
SILVER	TACTICAL
BRONZE	OPERATIONAL



Heddlu Police

DYFED-POWYS



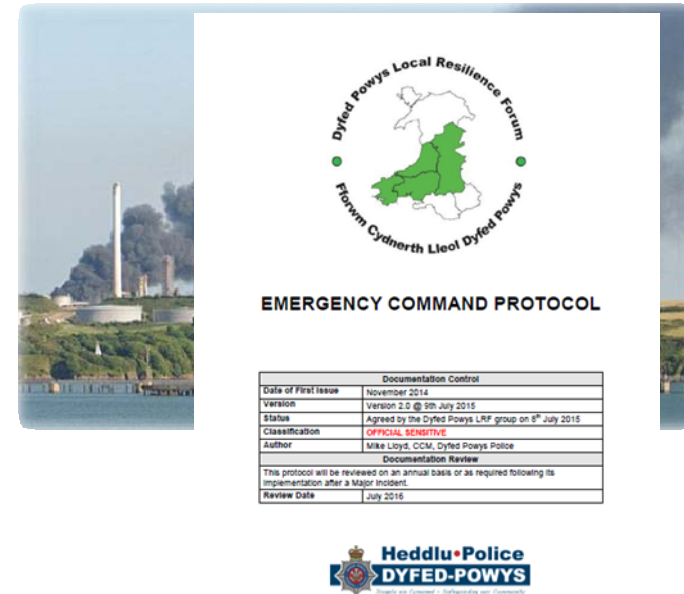
DPP / PCC Interaction

- As a Category 1 (Main) responder agency, Powys County Council acts in support and in partnership with Dyfed-Powys Police.
- Although not a 24/7 service, the Police will call upon the Council to fulfil a number of obligations relating to incidents.



DPP Expectations

- **Multi-Agency Engagement** at Strategic Co-ordination Group (Gold) & Tactical Co-ordination (Silver) meetings.
- Assistance with **‘Warning & Informing’** duties.
- **Highways** – Route management, including road closures & diversions (emergencies / Severe Weather)



DPP Expectations

- **Evacuation** - Transport, Accommodation & Feeding of 'Displaced Persons' including provision of Emergency Rest Centres.
- **Emergency Mortuaries** – ID appropriate sites, co-ordinate & manage (vis LA SPoC), the National Emergency Mortuary Arrangements (NEMA) or Local (Dyfed-Powys Police) Temporary Mortuary facilities.



DPLRF Mass Fatalities Plan Version 2.0 June 2015
PROTECTIVE MARKING: OFFICIAL - SENSITIVE



Mass Fatalities Plan

Ver. 2.0

June 2015

DPP Expectations

- **Humanitarian Assistance –**
Provision of Humanitarian Assistance Centres (HACs), Rest Centres and Friends & Family Reception Centres.
- Arrangements are detailed in the Dyfed-Powys Humanitarian Assistance guidance document.



Dyfed Powys Local
Resilience Forum

Humanitarian Assistance
Guidance



Emergency Planning & Resilience

Questions?

“In preparing for battle I have always found that plans are useless, but planning is indispensable”

Dwight D Eisenhower (1890 - 1969)

Supreme Commander Allied Forces WW2

First Supreme Commander of NATO

34th President of the United States

